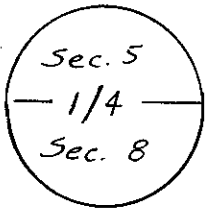


CERTIFIED LAND CORNER RECORDATION

T 14N, R 65W

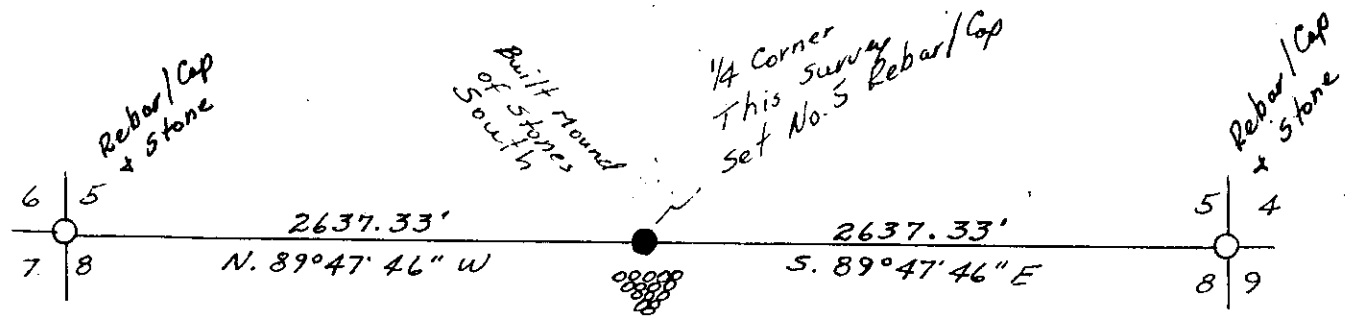


DESCRIPTION OF CORNER EVIDENCE FOUND, AND ORIGINAL RECORD (if known)
 No positive identification of original corner Monument could be made.
 Original Monument described as a granite boulder 14"x8"x7". The single proportional location fell in a area of scattered stones, many having dimensions which are near those described, however none having an unquestionable 1/4 mark. Therefore the proportional location was used.

DESCRIPTION OF MONUMENT AND ACCESSORIES ESTABLISHED TO PERPETUATE THE ORIGINAL LOCATION OF THIS CORNER:

Set #5 Rebar with aluminum cap. Built a mound of stones South of the Re-monumented corner.

SKETCH, WITH COURSE AND DISTANCE TO ADJACENT CORNER IF DETERMINED IN THIS SURVEY.
 (May Sketch or Paste Reproduction on Reverse Side.)



I, Edward C. Fry certify that I have carefully performed or reviewed the work done on the diagrammed corner as reported on this recordation form and approve the same.

Edward C. Fry
 Signature of Surveyor

Wyo. #662
 Registration No.

STATE OF WYOMING,
 Office of Clerk and Recorder,
 County of Saramit

495830

This "corner record" was filed for record on the 15 day of Aug, 19 78, was noted on the cross-index plat and is assigned page No. _____, in book No. _____.

Janet C. Witchard
 County Official

Cross Index No. _____	T. _____	R. _____	Mer. _____
<u>E-7</u>	T. <u>14</u>	R. <u>65</u>	Mer. _____
_____	T. _____	R. _____	Mer. _____
_____	T. _____	R. _____	Mer. _____
_____	T. _____	R. _____	Mer. _____
_____	T. _____	R. _____	Mer. _____
_____	T. _____	R. _____	Mer. _____

495830

Photographed.....

Indexed.....

Posted.....

Assessor.....